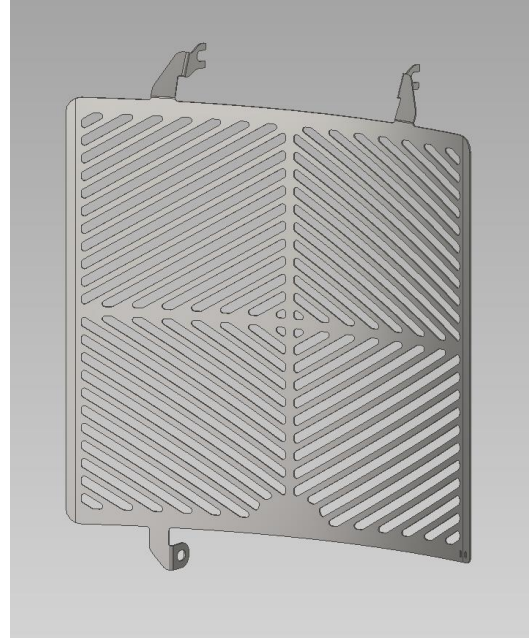
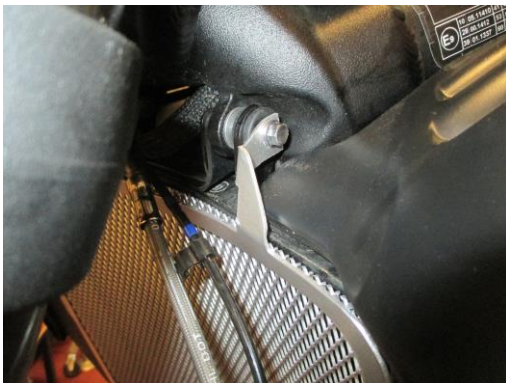




**Fitting Instructions for SRG0055SS Radiator Guard**  
**TRIUMPH STREET TRIPLE S, R & RS 765 '17-**



**In This Kit There Should Be**  
**1x Radiator Guard (SRG0055)**  
**1x Cable Tie**  
**2x 100mm Lengths of self-adhesive Foam**



Picture 1



Picture 2



Picture 3

### **TOOLS REQUIRED**

- Socket set to include 8 & 10mm socket & wrench.
  - Cable cutters.

### **FITTING INSTRUCTIONS**

- To fit the stainless radiator guard to the bike cut the foam strip provided into 10mm wide pieces and stick them to the back of the radiator guard frame, so that they sit between the radiator guard and the radiator.
- Loosen the nuts on the top left and top right of the radiator that mounts it to the frame, as shown in pictures 1 & 2.
- Remove the bolt that mounts the bottom of the radiator, as shown in picture 2.
- Offer the R&G Radiator Guard into position and locate the upper two slotted mounts over the threaded boss on the top mounts, so the radiator guard mount sits between the nut and mounting rubber, as shown in pictures 1 & 2.
- On the bottom of the radiator guard, refit the original bolt through the radiator guard, then the radiator mount and loosely tighten into the threaded boss on the mounting bracket, as shown in picture 3.
- Using the cable tie supplied secure the bottom left corner, looping the cable tie through the slots on the radiator guard and then through the bottom corner of the radiator matrix, before tightening.
- Tighten all bolts evenly and ensure the radiator is correctly mounted.

ISSUE 1 01/09/2017 (AR)

### **CONSUMER NOTICE**

The catalogue description and any exhibition of samples are only broad indications of the Products and R&G may make design changes which do not diminish their performance or visual appeal and supplying them in such state shall conform to the order. The Buyer acknowledges no representation or warranty (other than as to title) has been given or will apply to the Products other than those in R&G's order or confirmation and the Buyer confirms it has chosen the Products as being of merchantable quality and suitable for its particular purposes. Where R&G fits the Products or undertakes other services it shall exercise reasonable skill and care and rectify any fault free of charge unless the workmanship has been disturbed. The Buyer is responsible for ensuring that the warranty on the motorcycle is not affected by the fitting of the Products. On return of any defective Products R&G shall at its option either supply a replacement or refund the purchase money but shall not be liable if the Products have been modified or used or maintained otherwise than in accordance with R&G's or manufacturer's instructions and good engineering practice or if the defect arises from accident or neglect. Other than identified above and subject to R&G not limiting its liability for causing death and personal injury, it shall not be liable for indirect or consequential loss and otherwise its liability shall be limited to the amounts paid by the Buyer for the Products or the fitting or service concerned. These terms do not affect the Buyer's statutory rights.

R&G Racing

Unit 1, Shelley's Lane, East Worldham, Alton, Hampshire, GU34 3AQ

Tel: +44 (0)1420 89007 Fax: +44 (0)1420 87301 [www.rg-racing.com](http://www.rg-racing.com) Email: [info@rg-racing.com](mailto:info@rg-racing.com)



**R&G RACING RETURNS POLICY (NON-FAULTY GOODS)**

Returns must be pre-authorized (if not pre-authorized the return will be rejected). Goods may only be returned direct to us if they were purchased direct from us (customer must prove if necessary). Otherwise to be returned to original vendor. Goods must be in re-sellable condition, in the opinion of R&G Racing. All returns are subject to a 25% restocking and handling fee (25% of the gross value exc. P&P – at the prevailing price at time of purchase). The customer must pay any and all carriage charges. No returns of discontinued products, unless within 14 days of purchase. This policy does not affect your statutory rights and does not refer to faulty goods.

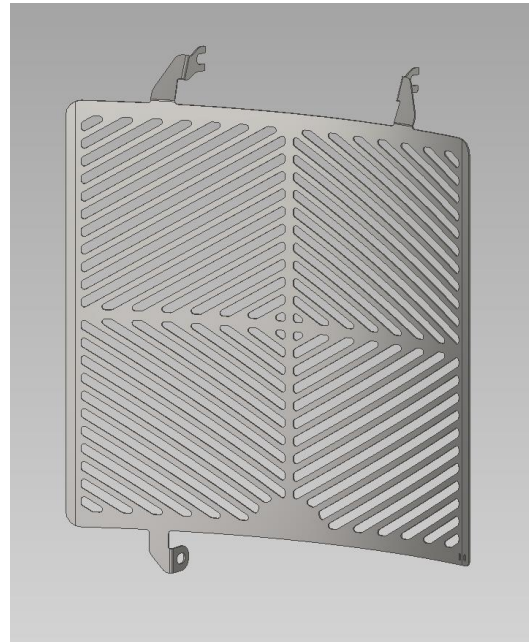
R&G Racing

Unit 1, Shelley's Lane, East Worldham, Alton, Hampshire, GU34 3AQ

Tel: +44 (0)1420 89007 Fax: +44 (0)1420 87301 [www.rg-racing.com](http://www.rg-racing.com) Email: [info@rg-racing.com](mailto:info@rg-racing.com)



**Notice de montage SRG0055SS Grille de protection radiateur**  
**TRIUMPH STREET TRIPLE S, R & RS 765 '17-**



- Le kit doit contenir :**  
**1x Grille de protection radiateur (SRG0055)**  
**1x Collier de serrage**  
**2x 100mm Longueur de mousse autocollante**

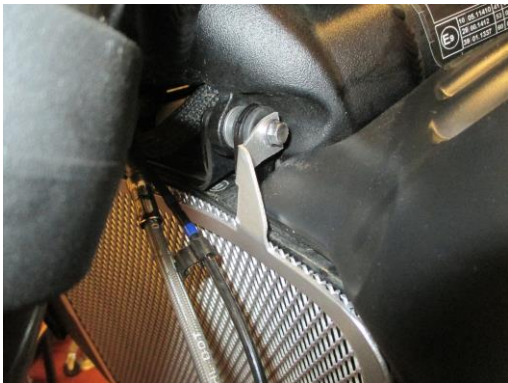


Photo 1

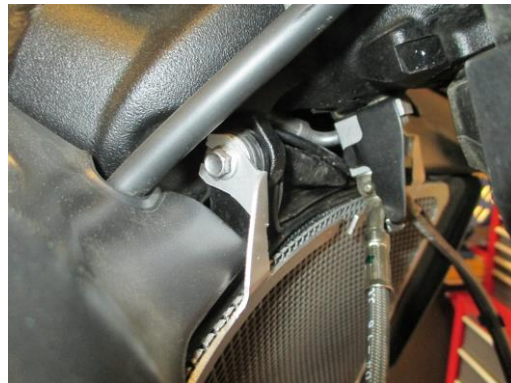


Photo 2

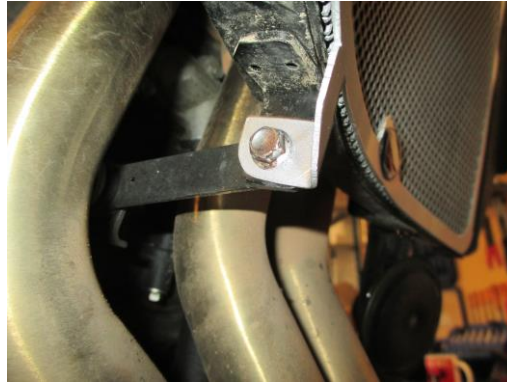


Photo 3

#### **OUTILS REQUIS**

- Clé à cliquet + douille 8 & 10mm
- Pince coupe câble.

#### **NOTICE DE MONTAGE**

- Couper le bandeau de mousse fourni en pièces de 10mm puis collez-les au bas du cadre de protection radiateur, de façon à ce qu'elles se placent entre la protection radiateur et le radiateur.
- Desserrer les écrous sur les coins supérieurs gauche et droit du radiateur qui le fixent au cadre, voir photos 1 & 2.
- Enlever le boulon qui fixe le bas du radiateur, photo 2.
- Monter la grille de protection radiateur R&G en place et placez les 2 supports supérieurs fendus sur le patron fileté sur les supports supérieurs, de façon à ce que le support de grille de protection radiateur se place entre l'écrou et le caoutchouc de fixation, voir photos 1 & 2.
- Au bas de la grille de protection radiateur, réinsérer le boulon dans la grille de protection radiateur, puis le support radiateur et serrer légèrement dans le patron fileté du support de fixation, voir photo 3.
- En utilisant le collier de serrage fourni, fixer le coin inférieur gauche, en encerclant le collier à travers les fentes de la grille de protection radiateur puis à travers le coin inférieur de la matrice de radiateur, avant de serrer.
- Serrer tous les boulons de façon égale.

ISSUE 1 01/09/2017 (AR)

#### **CONSUMER NOTICE**

The catalogue description and any exhibition of samples are only broad indications of the Products and R&G may make design changes which do not diminish their performance or visual appeal and supplying them in such state shall conform to the order. The Buyer acknowledges no representation or warranty (other than as to title) has been given or will apply to the Products other than those in R&G's order or confirmation and the Buyer confirms it has chosen the Products as being of merchantable quality and suitable for its particular purposes. Where R&G fits the Products or undertakes other services it shall exercise reasonable skill and care and rectify any fault free of charge unless the workmanship has been disturbed. The Buyer is responsible for ensuring that the warranty on the motorcycle is not affected by the fitting of the Products. On return of any defective Products R&G shall at its option either supply a replacement or refund the purchase money but shall not be liable if the Products have been modified or used or maintained otherwise than in accordance with R&G's or manufacturer's instructions and good engineering practice or if the defect arises from accident or neglect.

R&G Racing

Unit 1, Shelley's Lane, East Worldham, Alton, Hampshire, GU34 3AQ

Tel: +44 (0)1420 89007 Fax: +44 (0)1420 87301 [www.rg-racing.com](http://www.rg-racing.com) Email: [info@rg-racing.com](mailto:info@rg-racing.com)



Other than identified above and subject to R&G not limiting its liability for causing death and personal injury, it shall not be liable for indirect or consequential loss and otherwise its liability shall be limited to the amounts paid by the Buyer for the Products or the fitting or service concerned. These terms do not affect the Buyer's statutory rights.

**R&G RACING RETURNS POLICY (NON-FAULTY GOODS)**

Returns must be pre-authorized (if not pre-authorized the return will be rejected). Goods may only be returned direct to us if they were purchased direct from us (customer must prove if necessary). Otherwise to be returned to original vendor. Goods must be in re-sellable condition, in the opinion of R&G Racing. All returns are subject to a 25% restocking and handling fee (25% of the gross value exc. P&P – at the prevailing price at time of purchase). The customer must pay any and all carriage charges. No returns of discontinued products, unless within 14 days of purchase. This policy does not affect your statutory rights and does not refer to faulty goods.

R&G Racing

Unit 1, Shelley's Lane, East Worldham, Alton, Hampshire, GU34 3AQ

Tel: +44 (0)1420 89007 Fax: +44 (0)1420 87301 [www.rg-racing.com](http://www.rg-racing.com) Email: [info@rg-racing.com](mailto:info@rg-racing.com)